



SUNVISION



LED display has the characteristics of seamless perfect display, long lifespan, fast frame change, high refresh rate, good uniformity, wide viewing angle, high gray level and natural color reproduction. It is widely used in command & dispatch, security monitoring, video conference, demonstrations and various indoor conference room display areas.

SUNVISION LED

Creations change the world!
PRO series can be widely used in various occasions, high-definition and ultra-high definition



Sunvision Common Cathode Technology

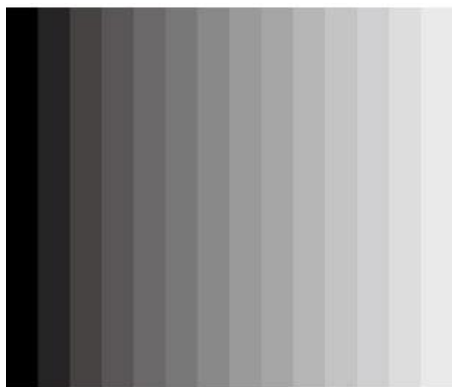
Sunvision common cathode technology improves brightness with better heat dissipation

High Brightness high Contrast with Perfect Performance



Low brightness with High grayscale

Low brightness with High grayscale to make the LED display in ultimate view performance



Low grayscale



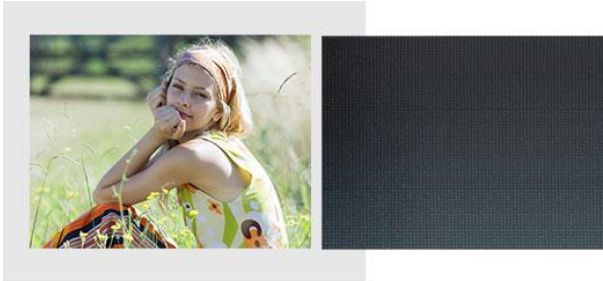
High grayscale



LEDFUL BM Series

High Contrast Ratio

High-end Black Body SMD Encapsulation, Excellent Performance, it has outstanding performance when works on the color and has very good contrast.



High-contrast color more vivid image

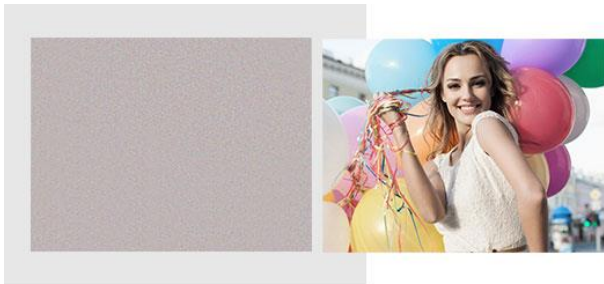
Contrast ratio



Reflective large the screen eclipsed

High Refresh Rate

It could be reach 3840HZ.



Steady image pickup

Refresh rate



With ripple and black screen



Pixel Pitch	1.25mm		
LED Pixel Type	SMD1515 1R1G1B LED		
Resolution(WxH, per cabinet)	384*432 pixels	384*216 pixels	192*432 pixels
Dimensions (mm, WxHxD, per cabinet)	480*540*54	480*270*54	240*540*54
Modules Array(WxH, per cabinet)	2*2	2*1	1*2
Weight(per cabinet)	7kg	4kg	4kg
Cabinet Material	Die-casting Aluminium		
Brightness	600-800nits		
Color Temperature	3200-9300K Adjustable		
Viewing Angle(H/V)	160 ° /160 °		
Contract	7000:1		
Power Consumption-Max	≤ 650w /m ²		
Power Consumption-Ave	≤ 150w /m ²		
Input Power Voltage	100-240VAC,50/60Hz		
Power Redundancy	Available		
Video Rate	30-120Hz		
Refresh Rate	1920-3840 Hz		
Control System	AET IPS System		
Color Depth	14-18bit		
Operational Temperature/Humidity	-10 °C ~+40 °C / 10%~80%RH		
Storage Temperature/Humidity	-20 °C ~+60 °C / 10%~80%RH		
IP Rating	IP30		
Lifetime	100,000hrs		
Service Access	Front		
Certification	CE / CB / FCC		